

Online Appendix to Migrant Networks and Trade: The Vietnamese Boat People as a Natural Experiment

Christopher Parsons ^{*} Pierre-Louis Vézina [†]

May 13, 2016

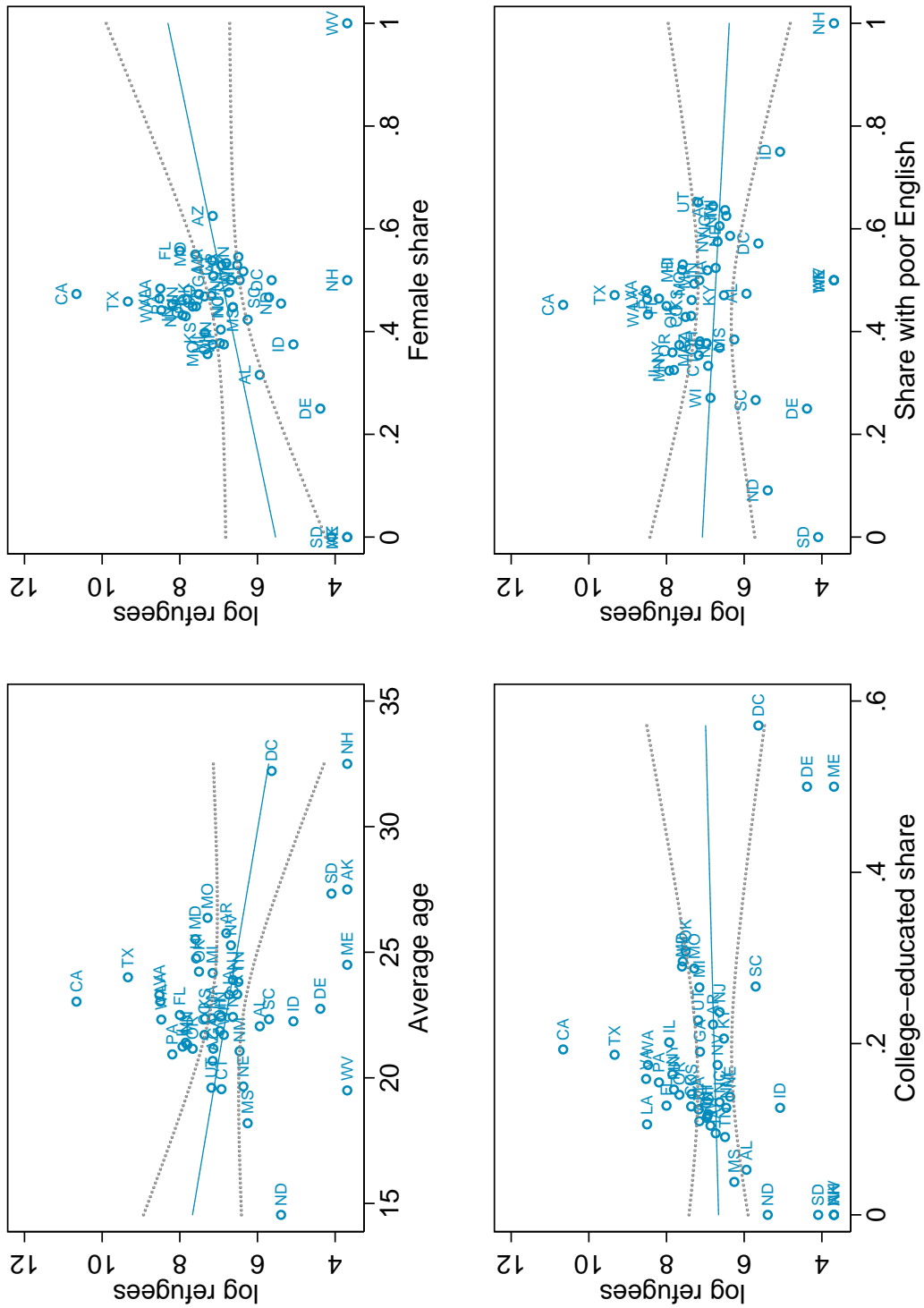
Abstract

This online appendix provides extra tables and figures to accompany our article.

^{*}Economics (UWA Business School), The University of Western Australia, 35 Stirling Highway, Crawley, WA 6009, Australia. Email: christopher.parsons@uwa.edu.au.

[†]Department of Political Economy and King's International Development Institute, King's College London, London, WC2R 2LS, UK. mail: pierre-louis.vezina@kcl.ac.uk.

Figure 1: Refugee characteristics across treatment intensity



Note: Source: US 1980 Census.

Table 1: Matching NAICS to SIC and the Rauch goods classification

NAICS	NAICS description	SIC	Rauch	Exports
111	Agricultural Products	1	w	1598.6
112	Livestock & Livestock Products	2	w	13.5
113	Forestry Products, Nesoi	8	r	210
114	Fish, Fresh/chilled/frozen & Other Marine Products	9	r	92.4
211	Oil & Gas	13	w	0.7
212	Minerals & Ores	10	w	38.6
311	Food & Kindred Products	20	n	2614.7
312	Beverages & Tobacco Products	21	n	223.7
313	Textiles & Fabrics		n	96.9
314	Textile Mill Products	22	r	18.3
315	Apparel & Accessories	23	n	38
316	Leather & Allied Products	31	n	382.5
321	Wood Products	24	r	473.7
322	Paper	26	r	349.3
323	Printed Matter & Related Products, Nesoi	27	n	25.9
324	Petroleum & Coal Products	29, 12	w	36.2
325	Chemicals	28	r	1908.3
326	Plastics & Rubber Products	30	n	153.7
327	Nonmetallic Mineral Products	14, 32	r	107.6
331	Primary Metal Mfg	33	r	372.5
332	Fabricated Metal Products, Nesoi	34	n	185.9
333	Machinery, Except Electrical	35	n	1701.5
334	Computer & Electronic Products	38	n	1670.8
335	Electrical Equipment, Appliances & Components	36	n	261.8
336	Transportation Equipment	37	n	3244.1
337	Furniture & Fixtures	25	n	16.1
339	Miscellaneous Manufactured Commodities	39, 3X	n	267.7
511	Newspapers, Books & Other Published Matter, Nesoi		n	3.3
512	Published Printed Music & Music Manuscripts		n	0
910	Waste & Scrap	91	n	789.5
920	Used Or Second-h& Merch&ise	92	n	36.4
980	Goods Returned (exports For Canada Only)		n	0
990	Special Classification Provisions, Nesoi	99	n	116.7

Note: The Rauch column tags the categories as w=goods traded on an organized exchange (homogeneous goods), r=reference priced, n=differentiated products. Exports are the sum of US Exports to Vietnam from 1995-2010 in USD million.

Table 2: Summary Statistics

1995						
Variable	Obs	Mean	Std. Dev.	Min	Max	Source
Exports to Vietnam (\$)	51	3980812	8203810	0	4.18E+07	US Census Bureau
Homogenous Exports to Vietnam (\$)	51	1523512	5260308	0	3.59E+07	US Census Bureau
Differentiated Exports to Vietnam (\$)	51	2433845	5174244	0	3.24E+07	US Census Bureau
Exports to the World (\$)	51	1.01E+10	1.54E+10	2.67E+08	8.67E+10	US Census Bureau
NAICS exported to Vietnam	51	6.33	4.81	0	24	US Census Bureau
Total NAICS exported	51	20.96	7.06	0	27	US Census Bureau
Vietnamese	51	15568.75	51428.50	89	364192	IPUMS
Chinese	51	15599.06	46664.54	389	270765	IPUMS
Asians	51	136896.90	376671.50	3329	2604856	IPUMS
1975 refugees	51	2369.22	3987.10	81	27199	US General Accounting Office
Income per capita (\$)	51	22482.00	3284.12	17176	31366	US Bureau of Economic Analysis
GDP (\$ millions)	51	143125.00	165893.60	13891	911577	US Bureau of Economic Analysis
Manufacturing share	51	0.86	0.11	0.410081	0.962703	US Bureau of Economic Analysis
West Coast	51	0.06	0.24	0	1	Google Maps
East Coast	51	0.27	0.45	0	1	Google Maps
1995-2010						
Variable	Obs	Mean	Std. Dev.	Min	Max	Source
Exports to Vietnam (\$)	816	2.31E+07	7.61E+07	0	9.62E+08	US Census Bureau
Exports to the World (\$)	816	1.56E+10	2.44E+10	2.33E+08	2.07E+11	US Census Bureau
NAICS exported to Vietnam	816	12.53	7.87	0	31	US Census Bureau
Total NAICS exported	816	27.43	6.01	0	32	US Census Bureau
Income per capita (\$)	816	31701.22	7784.46	17176	71220	US Bureau of Economic Analysis
GDP (\$ millions)	816	216997.80	268217.90	13891	1900463	US Bureau of Economic Analysis

Table 3: First stages

	(1)	(2)
	ln (Vietnamese)	ln (Vietnamese)
ln (Exports to World)	0.222 (0.142)	0.194 (0.157)
ln (GDP)	0.421* (0.227)	0.374 (0.285)
ln (1975 Refugees)	0.733*** (0.138)	0.741*** (0.158)
ln (Income per capita)		1.057 (0.711)
ln (Mfg share of GDP)		-0.747 (0.480)
West Coast		0.680*** (0.202)
East Coast		0.178 (0.217)
Constant	-6.640*** (1.730)	-16.318** (7.045)
N	51	51
R-sq	0.87	0.90

PPML estimates. Dependent variable is Vietnamese in 1995 (logs). The 51 obs. are 50 US States and Washington DC. The figures in parenthesis are robust standard errors, and * stands for statistical significance at the 10% level, ** at the 5% level and *** at the 1% percent level.

Table 4: 1995 Cross section: Extensive margin

	(1)	(2)	(3)	(4)	(5)	(6)
	Ext. margin	Ext. margin	Ext. margin	Ext. margin	Ext. margin	Ext. margin
	PPML	PPML-RF	IV-PPML	PPML	PPML-RF	IV-PPML
ln (Exports to World)	0.187** (0.075)	0.214*** (0.075)	0.163 (0.099)	0.201*** (0.072)	0.192** (0.075)	0.147 (0.099)
ln (State industries)	1.240*** (0.346)	1.419*** (0.460)	1.210*** (0.334)	1.183*** (0.294)	1.264*** (0.335)	1.129*** (0.282)
ln (Vietnamese)	0.150*** (0.052)		0.177** (0.083)	0.110* (0.058)		0.177* (0.094)
ln (1975 Refugees)		0.159** (0.071)			0.153** (0.073)	
ln (Income per capita)				0.257 (0.412)	0.286 (0.401)	0.143 (0.421)
West Coast				0.230** (0.111)	0.285*** (0.091)	0.161 (0.129)
East Coast				0.098 (0.099)	0.162 (0.102)	0.108 (0.097)
Constant	-8.422*** (1.648)	-9.573*** (1.661)	-7.983*** (1.979)	-10.799*** (3.809)	-11.373*** (3.782)	-8.804** (4.444)
N	51	51	51	51	51	51
R-sq	0.88	0.87		0.88	0.89	

Dependent variable is the number of industries (NAICS) with positive exports to Vietnam in 1995. State industries are the number of industries for which the State has positive exports to the world. The 51 obs. are 50 US States and Washington DC. Columns 1 to 3 give the PPML, PPML-RF (reduced form) and IV-PPML estimates, respectively. Columns 4 to 6 provide the same estimates with extra controls. The figures in parenthesis are robust standard errors, and * stands for statistical significance at the 10% level, ** at the 5% level and *** at the 1% percent level.

Table 5: Panel estimates: Year dummies interactions

	(1)	(2)	(3)	(4)
	Exports to Vietnam	Exports to Vietnam	Exports to Vietnam	Exports to Vietnam
main				
ln (Exports to World)	0.855*** (0.206)	0.865*** (0.207)	0.864 (0.724)	0.811 (0.728)
ln (GDP)	-0.282 (0.293)	-0.553 (0.465)	-3.957*** (1.438)	-3.877*** (1.452)
ln (Income per capita)	-0.875* (0.502)	-0.979** (0.488)	-2.523 (1.788)	-2.529 (1.787)
ln (Manufacturing share of GDP)	0.412 (0.332)	0.675 (0.430)		
West Coast	0.893*** (0.162)	0.701*** (0.169)		
East Coast	0.185 (0.126)	0.236 (0.145)		
ln (Vietnamese 1995)	0.173** (0.084)	0.374** (0.185)		
× 1996	0.002 (0.141)	-0.040 (0.145)	-0.001 (0.120)	-0.051 (0.124)
× 1997	-0.029 (0.079)	-0.049 (0.090)	-0.021 (0.082)	-0.051 (0.088)
× 1998	-0.035 (0.073)	-0.056 (0.091)	0.003 (0.066)	-0.033 (0.081)
× 1999	-0.010 (0.083)	-0.014 (0.099)	0.047 (0.064)	0.024 (0.076)
× 2000	0.055 (0.074)	0.045 (0.087)	0.158** (0.064)	0.124* (0.071)
× 2001	-0.055 (0.094)	-0.018 (0.088)	0.017 (0.087)	0.039 (0.068)
× 2002	-0.059 (0.111)	-0.019 (0.093)	-0.003 (0.111)	0.024 (0.079)
× 2003	0.052 (0.147)	-0.005 (0.144)	0.121 (0.132)	0.039 (0.124)
× 2004	0.020 (0.100)	-0.004 (0.106)	0.098 (0.085)	0.053 (0.088)
× 2005	0.294*** (0.068)	0.282*** (0.080)	0.434*** (0.101)	0.396*** (0.103)
× 2006	0.085 (0.067)	0.070 (0.077)	0.207** (0.093)	0.161* (0.091)
× 2007	0.160** (0.065)	0.141* (0.077)	0.290*** (0.100)	0.240** (0.101)
× 2008	0.118* (0.066)	0.106 (0.077)	0.243** (0.101)	0.197* (0.102)
× 2009	0.142** (0.066)	0.135* (0.077)	0.239*** (0.090)	0.201** (0.091)
× 2010	0.109* (0.065)	0.092 (0.075)	0.193** (0.086)	0.147* (0.087)
N	816	816	816	816
R-sq	0.82		0.85	
State FE	No	No	Yes	Yes

PPML (odd columns) and IV-PPML (even columns) estimates. Dependent variable is Exports to Vietnam. The 816 obs. are 50 US States and Washington DC over 16 years (1995-2010). The figures in parenthesis are robust standard errors, and * stands for statistical significance at the 10% level, ** at the 5% level and *** at the 1% percent level.

Table 6: Panel estimates: Trend, BTA, and Policy interactions

	(1)	(2)	(3)	(4)	(5)	(6)
	Exports to Vietnam	Exports to Vietnam	Exports to Vietnam	Exports to Vietnam	Exports to Vietnam	Exports to Vietnam
ln (Exports to World)	1.489*** (0.409)	1.467*** (0.395)	-0.089 (0.579)	-0.086 (0.578)	0.441 (0.289)	0.420 (0.283)
ln (Income per capita)	-0.060 (1.013)	-0.068 (0.995)	6.569*** (2.126)	6.551*** (2.114)	0.850 (1.079)	0.821 (1.090)
ln (GDP)	0.764 (2.251)	0.807 (2.203)	1.528 (1.408)	1.524 (1.393)	-3.499** (1.741)	-3.449** (1.753)
ln (Vietnamese) × BTA	0.160*** (0.052)	0.149*** (0.057)				
BTA	-0.785 (0.562)	-0.677 (0.651)				
ln (Vietnamese) × Post-2008			0.063** (0.031)	0.062* (0.032)		
Post-2008			-0.047 (0.339)	-0.034 (0.339)		
ln (Vietnamese) × Trend					0.013** (0.005)	0.012* (0.006)
Trend					0.171* (0.092)	0.183* (0.095)
N	816	816	255	255	816	816
R-sq	0.73		0.97		0.80	
State FE	YES	YES	YES	YES	YES	YES

PPML (odd columns) and IV-PPML (even columns) estimates. Dependent variable is Exports to Vietnam. The 816 obs. are 50 US States and Washington DC over 16 years (1995-2010). The 255 obs. cover only the years 2006-2010. The figures in parenthesis are robust standard errors, and * stands for statistical significance at the 10% level, ** at the 5% level and *** at the 1% percent level.